

The McKinley



{ Eastern Seaboard }

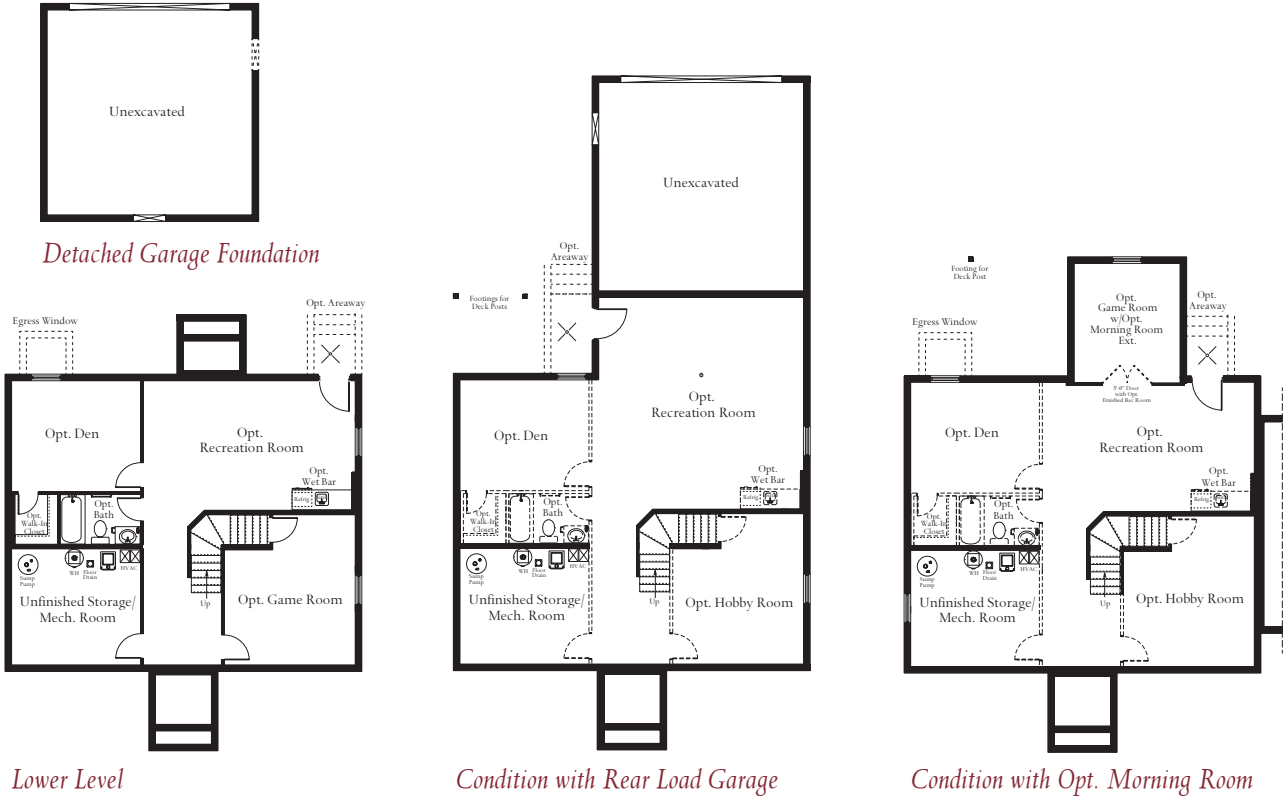


{ Federal }



{ Craftsman }

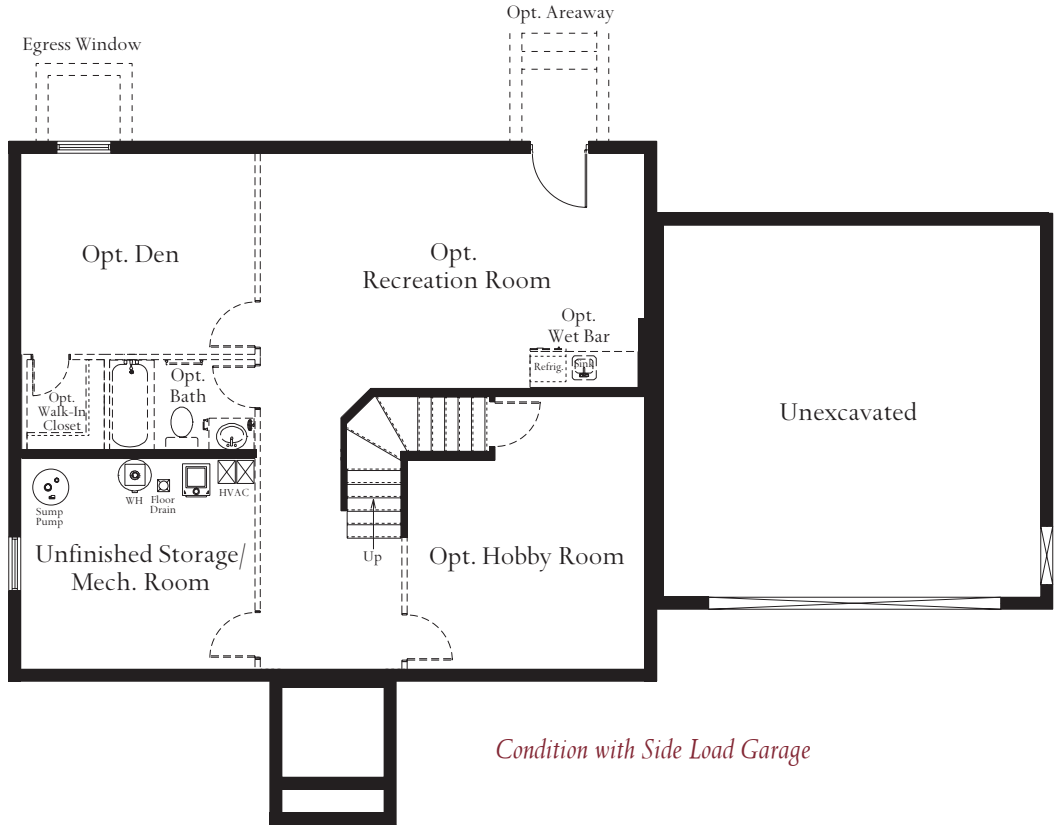
The McKinley is a home that has all of the luxuries expected but with an efficient design that is sure to please. With a large Great Room, open to the Kitchen, entertaining is easy in The McKinley. A large kitchen, complete with pantry and an oversized island, is the perfect gathering spot for the whole family. Just off of the foyer is the Library, a perfect space for a home office or more formal retreat. On the other side of the foyer is the Family Dining Room. Upstairs, the Master Suite includes a large bedroom and bath, complete with double vanities, oversized shower with seat, linen closet and walk in closet. Three additional bedrooms are on the upper level, along with a hall bath and generously sized laundry room. The lower level can be finished to include a Rec Room, Den, Full Bath and Wet Bar. The McKinley starts at 2,160 square feet.



Lower Level

Condition with Rear Load Garage

Condition with Opt. Morning Room



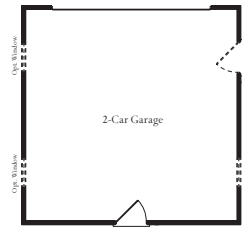
Condition with Side Load Garage

LOWER LEVEL

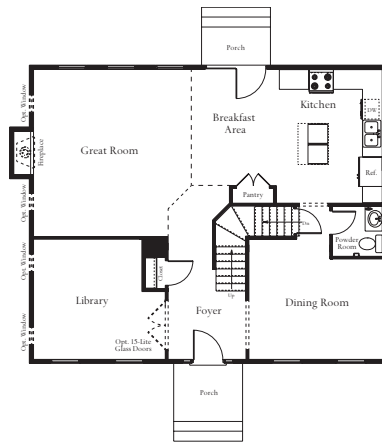
ATLANTIC BUILDERS
GIVING YOU MORE



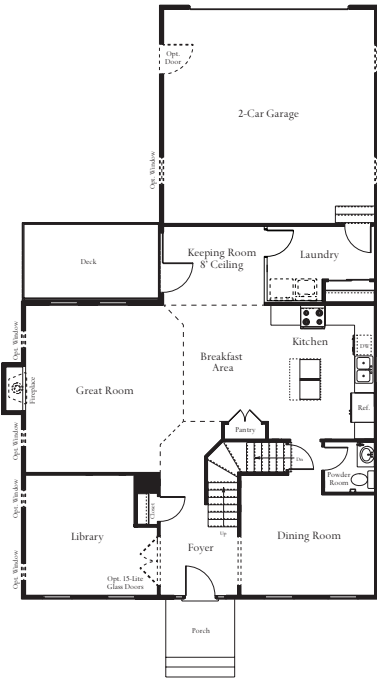
ATLANTIC BUILDERS
GIVING YOU MORE



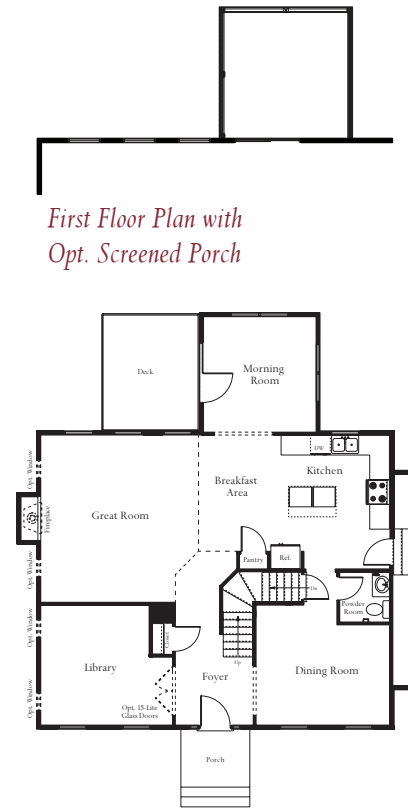
Detached Garage



First Floor Plan

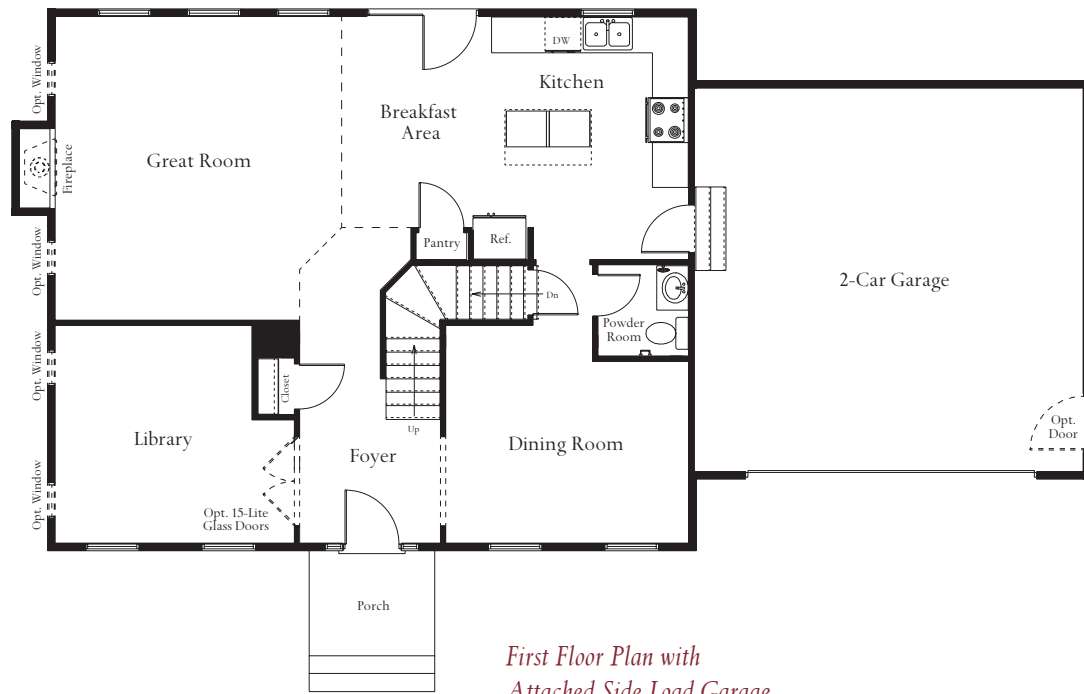


First Floor Plan with Attached Rear Load Garage



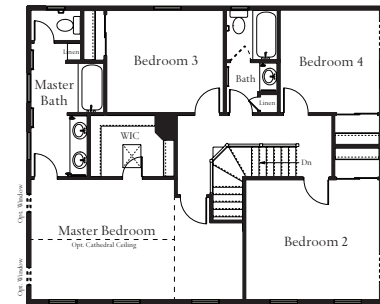
First Floor Plan with Opt. Screened Porch

First Floor Plan with Opt. Morning Room and Opt. Deck

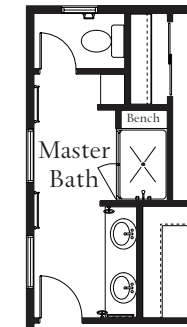


First Floor Plan with Attached Side Load Garage

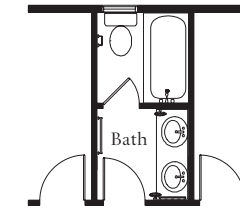
MAIN LEVEL



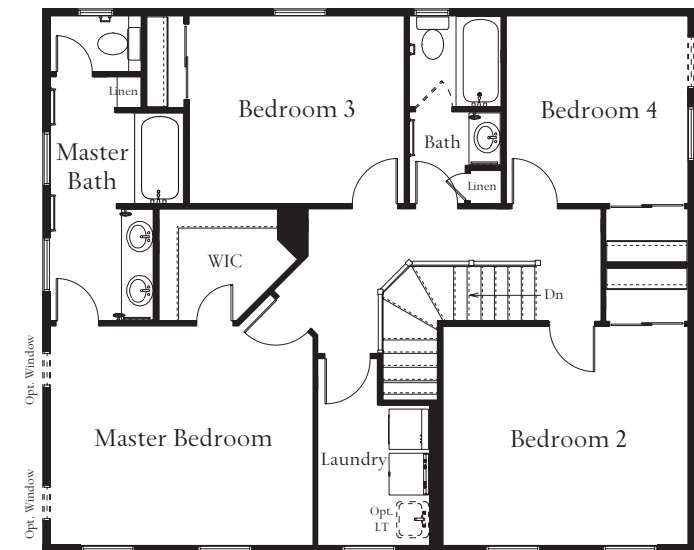
Second Floor Plan with Attached Rear Load Garage



Opt. Master Bathroom Shower Only



Opt. Hall Bath



UPPER LEVEL